

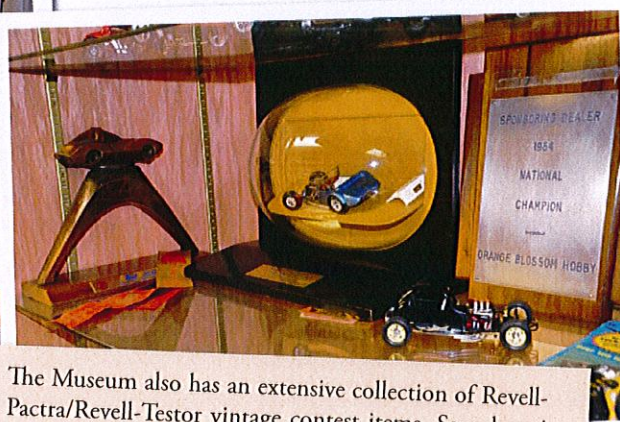


A quick look into the Museum and some of its contents

The International Model Car Builders' Museum was established in 1991 to acquire, and protect from loss, the history of the model car hobby. Since then, the collection has grown to over ten thousand items. We need help to pay the monthly rent so we can keep the doors open and continue to acquire, restore and protect the history of this grand hobby. Please be generous with your financial donations (which are tax-deductible).



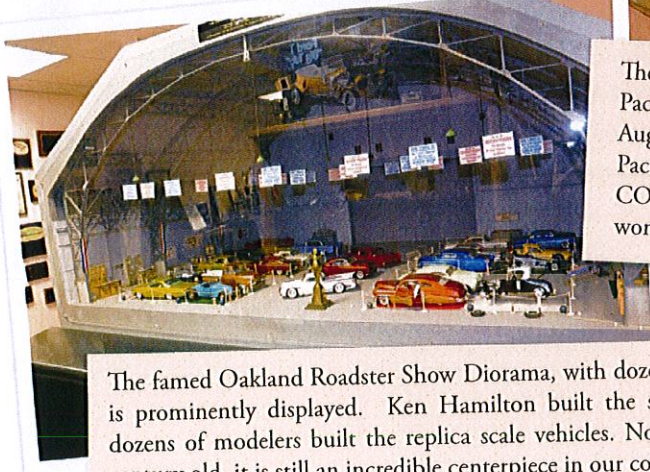
The 1957 Revell 1/4-scale Chevy V8 engine is also on display. This is the original presentation panel to General Motors. We also have two fully built-up quarter-scale engines. Incredible vintage detail!



The Museum also has an extensive collection of Revell-Pactra/Revell-Testor vintage contest items. Seen here is Augie Hiscano's co-winning Adult model from Revell-Pactra II. We also have Nordberg's co-winning Ford COE from R-PII, as well as Mike Johnson's Pegasus that won the top award at Revell-Pactra I.



The Museum has a display of the entire collection of "how-to" feature and other models built by Don Emmons in the Sixties. The models are incredible even today!

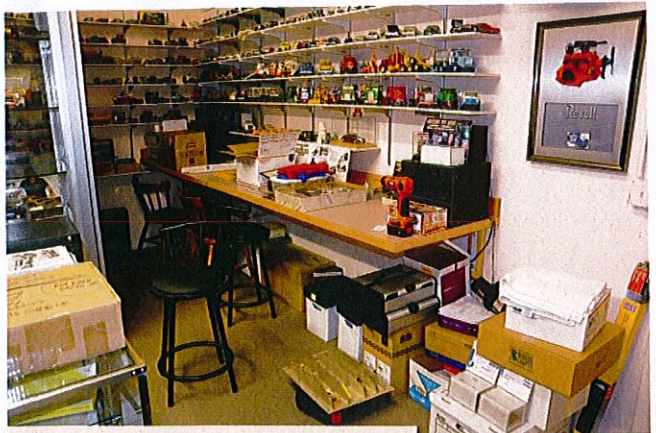


The famed Oakland Roadster Show Diorama, with dozens of scale models, is prominently displayed. Ken Hamilton built the scale building, and dozens of modelers built the replica scale vehicles. Now nearly a quarter century old, it is still an incredible centerpiece in our collection.

One of the Museum programs is our Clone the Past program where we replicate (or, acquire and restore) historic models that influenced the early years of the hobby. Presently, 14 such models are on display -- a real eye to the past!

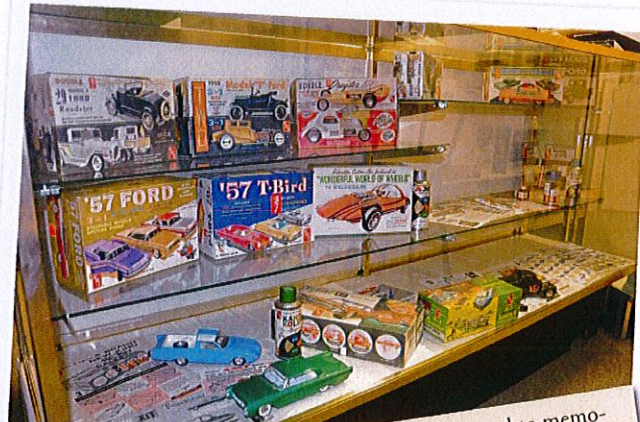
More on the back





Museum Trustees work three Saturdays a month to intake and organize continuing donations that arrive regularly. There are over 10,000 items presently in the collection.

The Museum is humbled and pleased to have the unfinished models of Bob Peoples, a great modeler and a Cobra expert. These breathtaking scratch built models will never be finished (Bob has passed away), but will always be on display as a tribute both to his skills and to what can be done in 1/25 scale! Check out the titles for the three models.



One of the display cases is dedicated to memorabilia from AMT. The kits are all vintage, with built-up models, lacquer paint cans and other items from the history of the company, like salesman sheets, bottle paints and other items are on hand.



Our extensive library contains nearly 3,200 vintage magazines and books. As seen here, the Librarians are constantly working to catalog publications as well as club newsletters from across the United States and Canada.



There's a display case also for Revell (with another for Monogram). In this case, rare wood bucks, a promo model of the Corvette Indy, and two examples of the historic quarter-scale Chevy engines can be seen. Rare stuff!